

Riello 40 Series

Riello 40 Series Single stage burner are a complete range of products developed to respond any request for Baking industry. All Burners use same basic components designed by Riello ensures high quality level guarantees safe working. burner models are proven for long trouble free operation with Baking ovens. Versions available with Gas & Light Oil.

Gas Burner

Model	Output
FS 5	23 - 58 KW
FS 10	42 - 116 KW
FS 20	81 - 220 KW

Light Oil Burner

Model	Output
G 5	28 - 60 KW
G 10	54 - 120 KW
G 20	95 - 213 KW



RS-RL Series

These Burners are designed with aim to offer Simple products with high reliability, easy commissioning & excellent working. All models available in Gas & Light oil version. Burner operation modes are Two stage, Progressive two stage or modulating as per requirement. Special models available with Electronic cam compound. Low NOx models available on request.

Gas Burner

Model	Output
Rs 25/M BLU	45/125-370 KW
Rs 35/M BLU	72/202-480 KW
Rs 45/M BLU	90/190-550 KW
Rs 55/M BLU	100/300-680 KW

Light Oil Burner

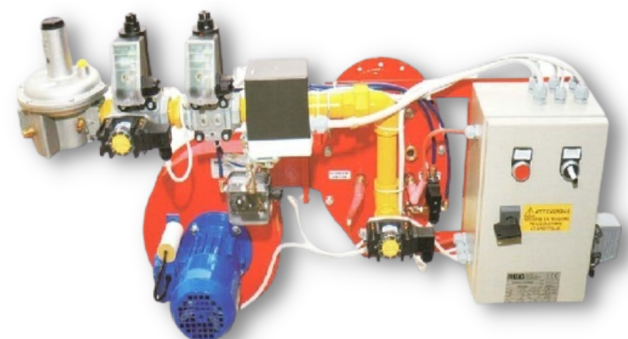
Model	Output
RL 34	97/154-395 KW
RL 44	155/235-485 KW
RL 50	148/296-593 KW
RL 70	255/474-830 KW



BPR SERIES- High Modulating ratio

These Burners are developed to treat application where precise temperature requirement & well suited in conveyORIZED biscuit oven. Burner operation is modulating with wide range of working & turn down ratio up to 1:40. Burner configuration in such a manner so installation & maintenance is easy. User defined burner orientation as per requirement. All models are suitable for Natural Gas, LPG & other Low calorific value gas. Special version available for combustion air up to 250 'C.

Model	Output	Model	Output
BP R 75	5-87 KW	BP R 450	18-525 KW
BP R 150	6-180 KW	BP R 600	28-700 KW
BP R 200	6-235 KW	BP R 800	35-930 KW
BP R 300	9-360 KW	BP R 1200	35-1450 KW





Bakery Oven Burners



Light Application Burners



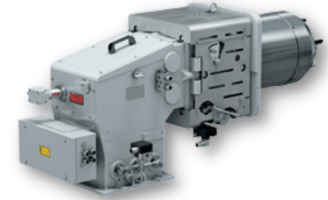
Modulating Burners



Industrial Application Burners



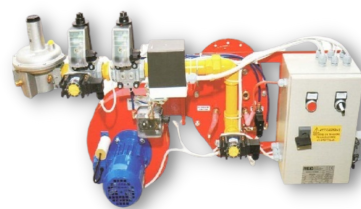
Electronic Cam Burners



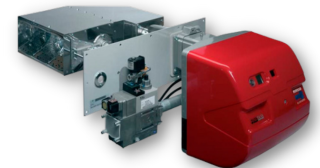
Industrial Dual Block Burners



High Working Temp Burners



High Modulating Ratio Burners



Air Duct Burners

RIELLO BURNERS - Incorporated in 1920, Most pioneering & largest Burner manufacturer in the world producing over 500000 burners per annum

We, SUNTEC ENERGY SYSTEMS, are an exclusive Distributor for Riello Burner in India & surrounding countries. Company has over 30 years experience of European pressure jet Burners for distribution. Installation & maintenance. We have over 70000 successful burner installation across India & surrounding countries. we have nationwide sales & service network covering all major cities. We have project management capabilities & competencies in Application Engineering. Design & Troubleshooting.

Sreelakshmi Energy Systems Pvt. Ltd. an ISO 9001:2015 certified & MSME registered company established in the year 2006 engaged in the business as Consultant Engineers & Contractors for LPG /PNG Fuel Piping Installations, Gas Monitoring / Detection System, Industrial Burners & Heat Pumps.

Burner suit to every need of heating like - Steam Boiler , Thermal Oil Heaters, Hot Water Generator, Hot Air Generator, Textile, Stenter, Bakery Ovens, High Temperature Furnaces, Kilns, Automobile Dryers & Heaters and many more.

Over & above, We have developed specific Burners for typical Indian application & fuel quality

Features

- Capacity range 10 KW to 80 MW
- Oil / Gas / Dual fuel Burners
- Mono block/ Dual block construction
- Mechanical / Electronic Cam version
- Easy to operate & maintain
- Trouble free operation for long time
- Reduced NOx Technology
- U regulation & VFD for blower
- Burners available for preheated combustion air (up to 250 C) to improve efficiency up to 8%
- Ultra low NOx FGR (Flue Gas Recirculating) Burners
- Special temperature, High modulating ratio, Air duct business
- Special Burner for Biofuel and low caloric value gases



SREELAKSHMI ENERGY SYSTEMS PVT. LTD
(ISO 9001:2015 CERTIFIED AND MSME REGISTERD COMPANY)

📍 Ponevazhi Road, Edappally, Kochi - 682024
✉️ retailsales@sreelakshmi.info
☎️ 8943339525, 9072600199, 9562418266
0484 2989297

SUNTEC
Suntec Energy Systems

Plot No. 56 GIDC [state phase-1]
Naroda, Ahemedabad - 382 330 (INDIA)